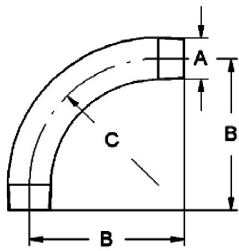
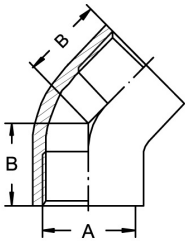
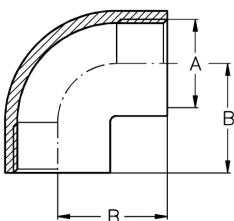


**Threaded fittings DIN EN 10241**
**Art.No**
**EUR**
**Art.No**
**EUR**
**Bend 90°, R**


DN	A	B	C	AISI316Ti	
6	R 1/8"	50	30	542328	22,10
8	R 1/4"	60	40	542329	22,10
10	R 3/8"	70	45	542330	22,10
15	R 1/2"	95	55	542331	22,10
20	R 3/4"	100	70	542332	31,40
25	R 1"	120	80	542333	51,80
32	R 1,25"	140	105	542334	80,10
40	R 1,5"	160	115	542335	109,80
50	R 2"	190	125	542336	162,70
65	R 2,5"	240	170	542337	190,90
80	R 3"	290	200	542338	Enquiry
100	R 4"	375	300	542339	Enquiry

**Angle 45°, Rp**


DN	A	B	AISI316C-1.4408	
6	Rp 1/8"	17,5	544128	Enquiry
8	Rp 1/4"	19,4	544129	17,80
10	Rp 3/8"	20,7	544130	18,40
15	Rp 1/2"	22	544131	19,30
20	Rp 3/4"	25	544132	28,90
25	Rp 1"	29	544133	38,30
32	Rp 1,25"	33	544134	56,50
40	Rp 1,5"	36	544135	63,40
50	Rp 2"	43	544136	80,70
65	Rp 2,5"	48,5	544137	229,10
80	Rp 3"	53,8	544138	291,30
100	Rp 4"	64,7	544139	Enquiry

**Similar to DIN EN 10241**
**Angle 90°, Rp**


DN	A	B	AISI316C-1.4408	
6	Rp 1/8"	17,6	542428	11,70
8	Rp 1/4"	20	542429	11,10
10	Rp 3/8"	21,3	542430	11,10
15	Rp 1/2"	27	542431	11,70
20	Rp 3/4"	33	542432	18,60
25	Rp 1"	38	542433	21,90
32	Rp 1,25"	45	542434	33,40
40	Rp 1,5"	50	542435	40,20
50	Rp 2"	58	542436	57,60
65	Rp 2,5"	69,3	542437	158,90
80	Rp 3"	77,5	542438	209,80
100	Rp 4"	97,3	542439	381,90

**Similar to DIN EN 10241**